

West Hill School



# KS4 Curriculum Pathways 2024

## Contents

<b>General Information</b> .....	1-15
Introduction.....	1-2
Key dates.....	3-4
A look at the exams.....	5-6
Coursework- what's involved? ...	7
Personal development .....	8
Support and Careers.....	9-10
Your timetable.....	11-13
Parents guide.....	14-15
<b>Compulsory Subjects</b> .....	16-23
English.....	17
Mathematics.....	18
Biology (Separate Science) .....	19
Chemistry (Separate Science).....	20
Physics (Separate Science).....	21
Combined Science (Trilogy) .....	22
<b>Optional Subjects</b> .....	24-40
Art.....	25
<b>Business and Enterprise</b> .....	26
<b>Business Studies</b> .....	27
Computer Science.....	28
Design Technology .....	29
Electronics .....	30
<b>Food Preparation and Nutrition</b> .....	31
Geography .....	32
German Language.....	33
History .....	34
Music .....	35
PE.....	36
Spanish.....	37
Religious Studies.....	38
Sport Studies .....	39

### Aiming High—Pathways to Success

Congratulations! You've made it halfway through your time at West Hill. Think about how different you are now from that person who stood in the yard in September 2021. There's a good chance you'll feel similar changes by the time you leave us in July 2026.

You're about to start the final terms of Key Stage 3 and turn your thoughts to what happens to you in Years 10 and 11. In reality many of you will already be working on GCSE materials in some subjects and have actually started Key Stage 4, however Years 10 and 11 will differ in several ways: new subjects may be started, you will begin examination coursework in some subjects and the preparation for examinations begins in earnest.

However, we want you to think a bit beyond even Years 10 and 11 because what you choose to do in KS4 might affect your opportunities after West Hill. This is called post-16 or 14-19 education and can last until you are 19 or older.

The vast majority of you reading this booklet will continue in further education in one way or another after you are 16 – on A levels, T levels or other vocational courses, apprenticeships or work based training. You will have many more choices about what you do after school than your parents had – and sometimes the choice can be a bit bewildering.

It's important, therefore, that we help you prepare for this in Year 9, to make sure that you're on the right pathway for you. That's why you've already started a programme of guidance to help you decide on your priorities.

The purpose of this booklet is to help you and your parents give careful thought and consideration to your choices. You will receive lots of information – from your form teacher, subject teachers and Mrs Corrigan. For advice about your future careers, you can ask Mrs Appleby. Remember that success in any subject requires effort, and that the more effort you put into your work, the more successful you will be.

Mr P Butterworth (Deputy Head)

## What is it like being a pupil in Key Stage 4?

Whenever you move on to a new stage in your life you will probably wonder what things will be like. Remember the changes from primary to West Hill? That was a much bigger change than the one you are about to make. Many things will be the same or very similar to the way they are now. It's okay to be a little nervous!



---

*The West Hill experience is one full of opportunities—you need to grasp them and make the most out of the next two years. It is much more than 25 periods a week.*

---

### **What will be similar?**

- You will still be studying a wide range of subjects.
- You will still be in familiar rooms.
- The way school works will still be the same although you will have new opportunities and privileges.
- You will know most of your teachers.
- You will know many of the other students in your group.

### **What will be different?**

- You will spend more time on subjects that you have chosen yourself.
- You will have more home learning and you will need to organise your personal time to allow for this. You will need to take charge of your progress and development.
- Your courses will lead to an external examination, marked by teachers outside of West Hill. Some will involve projects that will count towards your final grade. These are known as N.E.A.s

## Different Pathways?

You may already have an idea of what you want to do, or where you want to go, when you move on from West Hill. It could be A Levels, it could be an apprenticeship, or taking up training related to a job in which you are interested. These routes are called **PATHWAYS**. We want to make sure your pathways are broad so that you can easily move on, or even cross from one to the next, should you so wish.

## Why do I have to make a choice? What sort of Pathways?

Here are some reasons:-

- You will study fewer subjects in greater detail.
- Not every one has the same skills and abilities. We want you to select subjects where you will succeed the most.
- Different people prefer different subjects. We recognise that you are growing up and want to offer you the chance to make decisions for yourself about what suits you best.
- You may already have ideas about your future career, so choosing some subjects may help you gain important knowledge that will help you.

## But I've no idea what I want to do!

Don't worry, you're not unusual. We will make sure your Pathway is 'open' allowing you more time to make up your mind. Remember, grades and your personal qualities are often more important than specific subjects. You could consider the EBacc:

## What about the English Baccalaureate (EBacc)?

The Ebacc is a set of qualifications seen as an **ambitious and academic** curriculum. This would include the core of English, Maths, Science taken with a Humanities (Geography or History) and a Modern Foreign Language (German or Spanish).

You may wish to consider this if you are already thinking about a University pathway in the future.

## What happens to help me?

To help you make the right decisions for your options, lots of things are going to happen over the next few months to ensure you make some informed choices:-

**January 8th** Pathways activities during form.

**January 18th** **Pathways event for parents**

**January 22nd** Choices Week begins, GCSE style lessons

**January 25th** Year 9 Progress evening

**January 26th** **Pathway choices forms are made available –via e-mail**

**February 9th** **Final date for Pathways choices to be submitted. Late returns are less likely to get their chosen options.**

**May** Option subjects confirmed in an e-mail to parents.

Throughout this year:

Guidance from form tutors, subject teachers, Mrs Corrigan,

Mr Butterworth, Mrs Appleby, SEN team . . .

## Throughout Year 7,8 and 9

You and your parents will have already received information telling you what your strengths are. You will already have an idea of the GCSE grade range that you are aiming for from your 'House'.

### Careers lessons and personal development (IDP)

Yet more advice and information! How to match your personal qualities with your courses; issues regarding maintaining a balance; education opportunities for further and higher education.

### Choices Week (Starting January 22nd)

This is where you will receive detailed advice about the subjects which are on offer from the subject teachers – far more than we can put into a booklet or tell you about on an evening. You will get the chance to experience KS4 lessons and learn about new subjects. This is also a good time to have a look on the school website at our curriculum pages. Search for 'Choices Week'.

### January 26th - the KS4 Options Form is available

**And remember the date to submit it — February 9th**

### WHAT IF I CHANGE MY MIND?

Once you have handed your form in, we will start to plan for September. Unlike many other schools, we build our option blocks around the choices of our students. This means that if you change your mind later, we may not be able to change your subjects. We will always try to provide you with the choices you want, however we cannot guarantee this.

**It is important that you seriously think about your choices now, not later.**

## Let's examine the Exams...

GCSE, Vocational Courses, A and T levels? It's all a bit confusing so let's start by getting the facts straight so you know what you are letting yourself in for.

### What qualifications will I get?

It depends on your course. Nearly all our courses are GCSEs. Others are more work-related and vocational, You can be assured that all of our post-16 partners recognise and value these courses. We do them because they offer the right type of learning for different individuals.

All exams fall into types called levels. Our courses cover both Level 1 (GCSE Grades 1-3) or Level 2 (GCSE grades 4-9). As you might expect, when you make successful progress in education, so you move up a qualification level. For example, from Level 2 at West Hill to Level 3 if you start A Levels or a vocational award at college.

### Who are these courses designed for?

**You!** They are designed as two year courses of study for students in Years 10 and 11. At KS4, it is the main means of assessing progress so far – if you like, a snapshot of how good you are at 16.

Think of the exams as gateways on your particular pathway to the next stage of your education. Your grades will let you know in which areas you have been successful and whether you want to pursue this pathway to 16-19 education or switch to an alternative route.

### Can I choose anything?

Yes. But your teachers know that certain exam courses are better for some students than others. We will tell you which courses we think might better suit you.

### What grades can I get for KS4 exams?

Depending upon your course, GCSE grades are awarded 1 - 9, in some subjects Pass, Merit and Distinction. Results depend entirely upon the quality of your work. You should always aim for at least your target grades rather than the minimum grades needed to get to the next stage in your education or training.



## Let's examine the Exams (continued)...

### GCSE Exams — May/June 2026

Exams are spread out over four to five weeks so you should find there is some time in between exams for revision. There's even a half-term in between to give you extra revision time. The timetable for exams is drawn up well in advance so you'll know the date of each paper a long time before the exam period.

### Will we all do the same examination paper?

For some subjects you will be entered for an examination at 'tiers' – different levels of papers depending on how good you are at the subject. This means that the questions on the exam paper will be worded to enable you to answer effectively at your own level. They will be more suited to your ability and easier for you to understand.

Your teachers will tell you about tiers nearer the exam entry time. Some exam papers are the same for everybody.

### What if I have problems with exams?

I just can't do exams; I go to pieces.

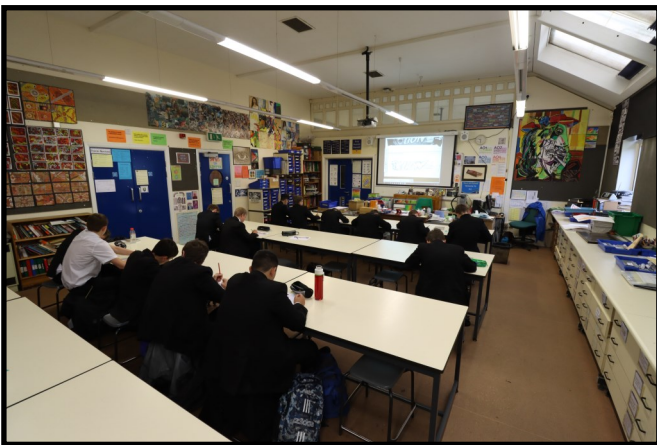
Take heart. If you choose the subjects that best suit you, work consistently, attend regularly, complete your coursework and revise thoroughly you could surprise yourself. Your teachers will be helping you along the way and offering more advice and information.

### What if I have special learning needs that School already knows about?

For boys who already receive extra support from the LSU, the staff will help guide you towards a pathway that suits you. Our **Foundation Learning** programme has been designed to help boys working at Entry Level/Level 1 progress based on their individual needs. If this is suitable to you then the LSU will get in touch. Also, the examination boards make some allowances for certain students who have particular needs. School will apply for these allowances on your behalf. You may be given help with reading or writing your answers. In some cases you may receive extra time to complete the work. We will make special efforts to ensure that you perform at your best.



## A closer look at Non-Examination Assessments...



There are many skills that can't be tested by the traditional written exam – practical and speaking skills for example. These assessments gives you the chance to demonstrate the many abilities you have and so makes the final mark you receive much more reflective of your range of skills.

Some examples include:

Individual and team sports sessions in PE.

Musical performances.

Building up a portfolio of your own Art work.

Planning and preparing a meal in Food.

Having a conversation in MFL.

Researching different types of businesses in Business Enterprise.

Designing and making a prototype in Design and Technology.

Designing and making a circuit in Electronics

The more interest you show in the skill being assessed and the more practice time you put in the better



## Coursework! Exams! What about me?

Whilst doing well in your exam courses in KS4 is important, it's not the only thing that matters. West Hill wants you to turn out as a responsible, mature, helpful and polite person as well. We take your personal development as seriously as your academic success. Your Student Leadership Award will provide evidence for your development in this area. Employers are just as interested in other aspects of your personality. Everyone can succeed in these no matter how many exam awards they get.

Can you:

- Achieve your potential? – in other words, meet your predicted grades – at whatever level? This shows you work hard and can meet targets.
- Get on with people?
- Solve problems?
- Use your imagination and show resourcefulness?
- Show planning skills, organisational ability and good time management?
- Demonstrate good attendance, punctuality, reliability, and responsibility?
- Find out things for yourself, independently?
- Present findings well ? (e.g. speaking, writing, PowerPoint, etc.)
- Work in a team and meet deadlines?
- Show leadership, self-confidence and honesty?

Aspects of your KS4 subjects and IDP teaching will consider these qualities. Throughout Years 10 and 11, you will have many opportunities to develop these skills to impress people in and outside of school.

## Some Personal Development opportunities at KS4...

- Representative on the School Council
- Member of the Youth Assembly
- Sports teams and captaincy
- Prefects
- Work Experience
- Competitions
- Workplace visits and employer talks
- Visits to colleges and universities
- Mock interviews
- Co-curricular activities
- Subject technicians
- Library assistant
- Peer Mentors
- Duke of Edinburgh Award
- The Student Leadership Award.

## Who can help?

### Teachers

Subject teachers will give you advice and plan sample lessons about KS4 courses. Remember there may be a choice within a subject. Teachers can give you detailed advice about types of learning and skills needed in their subject and how assessment is undertaken. Ask before you commit yourself.

### Year 9 Form Tutors

Your Form Tutor can advise you and offer useful support. They know you best of all and know how you are getting on at school. They will talk to you all individually and check your final Pathway choices to see if your choices reflect your best interests. They will help ensure you meet deadlines.

### Mrs Corrigan — Head of Year 9

Mrs Corrigan knows all of Year 9 and is aware of students that may need extra support. If she is unable to help, she can point you towards someone who can. She will also listen in confidence if you have personal difficulties that need to be discussed.

### Careers Team

Mrs Appleby is fully involved in the whole Year 9 Pathways programme. Don't hesitate to ask her general or particular questions, especially about post-16 progression. You can also book an interview with Mrs Davidson our Careers adviser.

### The Learning Support Unit (LSU)

Some Year 9 students have close involvement with staff in the LSU. Teachers there know about the Pathway process in particular our Foundation Learning programme. They can offer you support and advice, especially if you think learning problems may affect your success at KS4.

### Parents, Friends and Family

You may have relatives and family friends who have recently left school or know about different career areas. Talk to them about their pathways and career choices.

# KS4 and Careers

The subjects you choose and qualifications you take may be guided by the career you would eventually like to do. At this stage in life, you may not have any idea about what you want to do. Don't worry — you are probably the same as most students in Year 9!

If that is the case, try to keep your subject Pathway as broad as possible. A good mixture of subjects will help to keep your route open —wherever you eventually decide to go.

Most of your careers information and guidance will be given in detail in Years 10 and 11, but it's not too early to start thinking about areas of work that appeal to you.

Think about the type of work you might like to do and find out about what different jobs this work can lead to. Even if you know what career you would like to do, still do some homework. Find out what skills and qualifications you will need. Knowing as much as you can now about careers, jobs and the world of work will help you to choose your subject options.

## Who can help with Careers?

Websites such as:

[www.gmacs.co.uk](http://www.gmacs.co.uk)

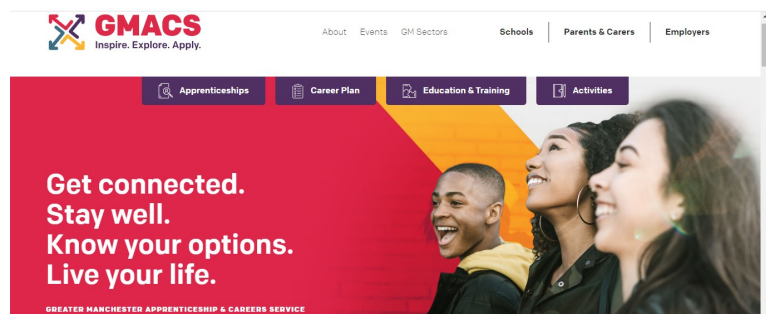
[www.positive-steps.org.uk](http://www.positive-steps.org.uk)

[www.nationalcareers.service.gov.uk](http://www.nationalcareers.service.gov.uk)

These can be good starting points as well as a reference to other useful information.

Mrs Appleby is the first point of contact in school for careers information. She will be available during form and break times. Mrs Davidson is our Careers Adviser from Positive Steps, who will provide careers advice to specific groups of students.

The SEN team are another source of advice. If you struggle with exams or are worried about putting a Key Stage 4 timetable together, the team may be able to help, especially if you are already working with staff there. They will discuss your ideas and may be able to offer additional support or programmes which are only available to certain students.



# Your own KS4 Timetable...

There are four parts to your timetable for Years 10 & 11:-

- Subjects you have to do –compulsory courses
- Subjects you choose to do –your options
- Additional Learning
- Enrichment, co-curricular.

## Compulsory Courses and Permitted Choices

Everyone has to do courses including:

- English
- Mathematics
- Science
- PE (Games), RE, IDP—non-exam.

Your teachers will advise you about the right course for you when studying these subjects. All of these subjects use setting (different groups) to ensure you receive the right teaching for your ability level.

**The Science team will recommend either Trilogy (2 GCSE's) or Separate Sciences (3 GCES's).**

**Students cannot take Business Studies with Business Enterprise.**

**Students cannot take PE with Sports Studies.**

## SUBJECTS YOU CAN CHOOSE TO DO (YOU HAVE 3 PERSONAL CHOICES)...

- Art
- Business Studies
- Business & Enterprise –vocational
- Design & Technology
- German
- Spanish
- Music
- Religious Studies
- Computer Science
- Electronics
- Food Preparation and Nutrition
- Geography
- History
- PE (as a GCSE)
- Sport Studies –vocational

# Your own KS4 Timetable (continued)...

To ensure that we develop you as a person and equip you to participate fully in adult life, everyone has to take part in our PSHE , Careers and RE program.

## **Religious Education**

In addition to the option of taking GCSE RE, a non-assessed RE course is taught for approximately 10 weeks in each year. In Year 10 you will look at the role of religion around the world, for example religion and its role within politics in the USA. In Year 11 you will look at topical issues and the role and influence that religion may play in these modern day issues, for example by examining the conflicts in Israel and Palestine and by examining religious perspectives on the environment and capitalism.

## **Careers Education**

This takes place as part of our IDP (Individual Development Programme) . In Year 10 you will complete 10 lessons and use the Xello website to review your work experience, examine Employability skills, apprenticeships and examine how British values link to the workplace. In Year 11 you will produce a CV and Personal Statement, research Career areas, Post-16 courses and vacancies online. You will get help with making applications including any college or apprenticeships.

## **Personal, Social and Health Education**

This takes place as part of our IDP. In Year 10, you will look at issues such as mental health, testicular cancer, gambling, extremism and gender identity. In Year 11 you will look at sexual harassment, respectful relationships and the risks of gang involvement and county lines.

## **Games and Wellbeing**

In these sessions you will take part in individual and team sports. Physical health can benefit our mental health and be a great way to relieve stress. You will also look at other ways to stay healthy, for example by looking at food and nutrition.

# What might my choices look like?

For example; you are keen to pursue a Pathway involving practical/hands-on courses You also want to do a language and you enjoy History. Having listened to your subject teachers, your choices may be:

- **Design and Technology**
- **German**
- **History**

OR you want to specialise in Music and area also interested in Geography. You enjoy sport and want to do something active. Your choices may be:

- **Music**
- **PE**
- **Geography**

OR you have a passion for design , enjoy programming during IT lessons and would like a creative career

Your choices may be:

- **Art**
- **Computer Science**
- **Design and Technology**

OR you are interested in subjects that involve background reading and like the sound of A levels in subjects like Economics, Law, Politics, your choices may be:

- **History**
- **Business Studies**
- **Religious Studies**

OR you are interested in running your own catering business. Your choices may be:

- **Food**
- **Business and Enterprise**
- **Geography**

OR you really don't know what you want to do in the future so choose the Ebacc pathway. This is well respected by colleges and employers.

- **History or Geography**
- **Spanish or German**
- **Any other option**





## Parents' Guide...

Please help us to provide the right course for your son's needs by studying this booklet and by discussing its contents with him. In our experience, a satisfactory KS4 experience usually comes about when school, pupil and parent are all working and talking together.

Work through these questions with your son to help him think carefully about how Years 10 and 11 will help him after he leaves West Hill School. As additional information arrives (e.g. School subject reports) you may have to modify your plans together.

As far as you are able, you need to work with your son to be clear about the following:

### His likes and what he is good at...

It is easier for your son to build a timetable around what he likes doing and where he is successful. Whilst this might give a general direction of where your son's strengths lie, (e.g. in the humanities, sciences, technical subjects) you also need to consider subjects that might be required in any areas of work in which he has shown an interest.

### Course content and assessment...

Details will be given to your son during Choices Weeks when subject Heads of Departments will speak to groups about what is on offer at KS4. Make sure you talk to your son about this information, especially in subjects where he shows a definite interest. You will also be able to view presentations for each subject on our website.

### Interests...

What kind of a person is your teenager? Does he like writing projects, helping people, working independently, designing something, being outdoors or doing something practical? These personal learning preferences and other qualities should be thought about when deciding the type of work that he might enjoy.

### Post 16...

Knowing which area of work or career might best suit your son will equip you with information about which level of qualifications is needed and which post-16 Pathway might be best for him.

If you do know, it might influence his choices in Key Stage 4 at West Hill. Remember all subjects will broaden his experience and prepare him for work or study after Year 11.

The local college websites are a useful resource to start looking ahead to the opportunities that exist beyond West Hill.

## A page to jot some notes on!

The next pages in this booklet give you information about the subjects that are compulsory and those that you can choose for your options. Read them carefully and if there's anything you don't understand or you need more information, talk to your form teacher, your subject teacher or the Head of Department for the subject.

Don't forget you have 3 personal choices from the following list. We ask you to choose a reserve, make this choice carefully. We are able to meet the first 3 choices for the overwhelming majority of our students.

- Art
- Business Studies OR Business and Enterprise
- Design & Technology
- PE (as a GCSE) OR Sport Studies
- German and/or Spanish
- Music
- Computer Science
- Electronics
- Food Preparation and Nutrition
- Geography
- History
- Religious Studies

---

---

---

---

---

---

---

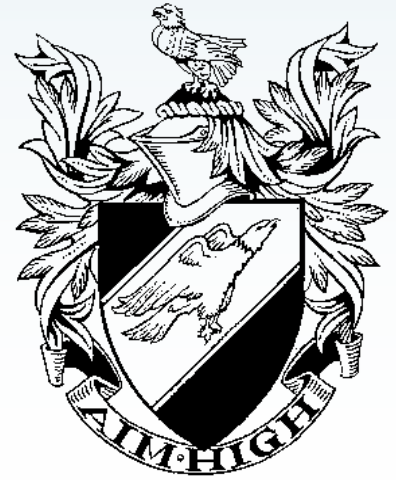
---

---

---

<b>Choice 1</b>	
<b>Choice 2</b>	
<b>Choice 3</b>	
<b>Reserve</b>	

# Compulsory Subjects



# English (GCSE)



## What will I do?

You will take English Language and English Literature, resulting in two separate GCSEs. Although the grades are allocated separately, the skills for these two courses are very much intertwined.

Whilst following the English Language course, you will learn skills in reading, writing, speaking and listening. You will study fiction and non-fiction texts, different styles of writing and how to become a confident speaker and good listener.

The English Literature course involves you reading and showing understanding of a range of text types, covering prose (novel), drama (play) and poetry. You will be required to analyse these texts and interpret their themes, characters, language and structure. This will need some powerful thinking skills.

## What is studied in English Language?

- Reading of fiction and non-fiction
- Writing for specific audiences and purposes
- Writing in a range of different forms and styles
- Speaking and Listening (although a requirement to be studied, this does not count towards your final grade)

## What is studied in English Literature?

- Shakespeare: one complete play
- A 19th century novel
- Modern texts, such as short stories
- Poetry, both modern and from the Literary Heritage

## How will I be assessed?

### English Language (AQA Exam board)

External exam: 100%

Two exams, taken at the end of Year 11

### English Literature (AQA Exam board)

External exam: 100%

Two exams, taken at the end of Year 11

## Where can I find more details?

From the AQA website—[www.aqa.org.uk/subjects/English/gcse](http://www.aqa.org.uk/subjects/English/gcse). Look at English Language and English Literature. The specification codes you need are 8700 for English Language and 8702 for English Literature.

The skills you develop in English will help you in your other subjects and are required for most academic courses and jobs. If you go on to study English at college or university, your qualifications can lead to a huge variety of careers – see <https://www.prospects.ac.uk/careers-advice/what-can-i-do-with-my-degree/english>. English is especially useful for jobs that require creativity and communication skills!

# Mathematics (GCSE)



## What will I do?

All students will take a GCSE in Mathematics (AQA Specification Code 8300). This GCSE consists of three papers, one non-calculator and two calculator papers. All of the papers last for 1 hour and 30 minutes and are taken at the end of year 11. This specification awards grades from grade 9 (the highest) to grade 1 and are available at Higher (grade 9 to 5) or at Foundation (grade 5 to 1).

## What is studied in Year 9?

The GCSE course is introduced in Year 9 and all assessments reflect this. All boys study the same Scheme of Learning. The main emphasis is on multi-step problem solving questions.

## What is studied in Years 10/11?

The GCSE Scheme of Learning continues in year 10 and is split into units, each unit has its own Scheme of Learning and checkpoint record. All of the 6 topic areas are covered throughout Years 9, 10 and 11, these are: Number, Algebra, Ratio, Proportion and rates of change, Geometry and measures, Probability and Statistics.

## How will I be assessed?

There are 3 papers at the end of Year 11. Paper 1 is non-calculator, Papers 2 and 3 both allow a calculator to be used. Each examination is 1 hour 30 minutes with a total time of 4 and a half hours. Each paper has 80 marks giving the total number of marks out of 240. Grades are awarded dependent on the number of marks achieved over all 3 papers.

## Where can I find more details?

From the AQA website: [AQA | Mathematics | GCSE | Mathematics](#)

See your Maths teacher or speak to Miss Fisher the Head of Mathematics.

## Additional information...

The Higher tier includes questions and topics that will stretch the most able and also assume knowledge of the Foundation tier content. The Foundation tier covers the core mathematical understanding and skills.

Both tiers include multi-step problem solving as well as questions which cover more than one topic area.

The two tiers have common questions which overlap.

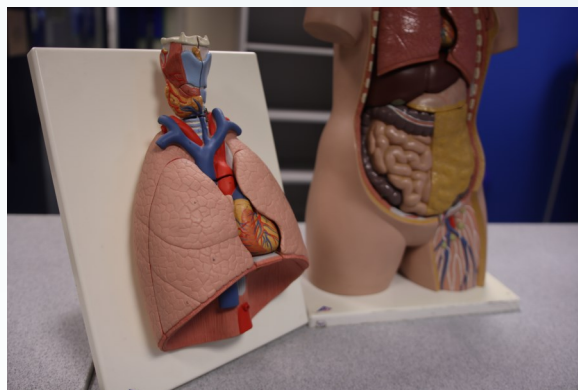
Foundation will cover grades 1 - 5 and Higher will cover grades 4 - 9.

# Biology (Separate Science)



## What will I do?

The Biology course is broken into seven separate topics. This course provides a firm foundation for progression to A-level Biology. On completion of the course students will be awarded a GCSE in Biology.



## What is studied in Years 10/11?

- Cell Biology;
- Organisation;
- Infection and response;
- Bioenergetics;
- Homeostasis and response;
- Inheritance, variation and evolution;
- Ecology

## How will I be assessed?

The Biology examinations consist of two written papers, each will be 1 hour and 45 minutes long. Each paper will assess the knowledge and understanding from different topics. Each is equally weighted and worth 50% of the overall GCSE.

## Where can I find more details?

From the AQA website: [AQA | Science | GCSE | Biology](#)

See your Science teacher or speak to Mr Carty (Head of Science)

## Additional information...

**Note: Students taking the Separate Science pathway have to take all three separate GCSE science subjects. Separate Science forms part of the EBacc.**

**This can lead into careers in healthcare sciences, sports sciences, animal care and conservation.**

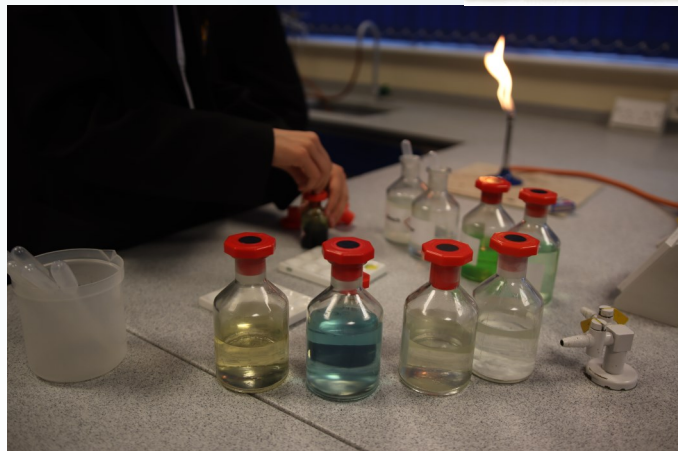


# Chemistry (Separate Science)



## What will I do?

The Chemistry course is broken into ten separate topics. This course provides a firm foundation for progression to A-level Chemistry. On completion of the course students will be awarded a GCSE in Chemistry. This could lead to careers in; Careers; Chemical engineer, Forensic scientist, Food Scientist, Colour Technologist, Medicine, Researcher.



## What is studied in Key Stage 4

- Atomic structure and the periodic table;
- Bonding, structure and the properties of matter;
- Quantitative Chemistry;
- Chemical changes;
- The rate and extent of chemical change;
- Organic Chemistry; Chemical analysis;
- Chemistry of the atmosphere;
- Using resources.

## How will I be assessed?

The Chemistry examinations consist of two written papers, each will be 1 hour and 45 minutes long. Each paper will assess the knowledge and understanding from different topics. Each is equally weighted and worth 50% of the overall GCSE.

## Where can I find more details?

From the AQA website: [AQA | Science | GCSE | Chemistry](#)

## Additional information...

GCSE Chemistry is an important science. It gives students a good understanding of the nature of substances, how they react together and how our knowledge of Chemistry is used in business and industry.

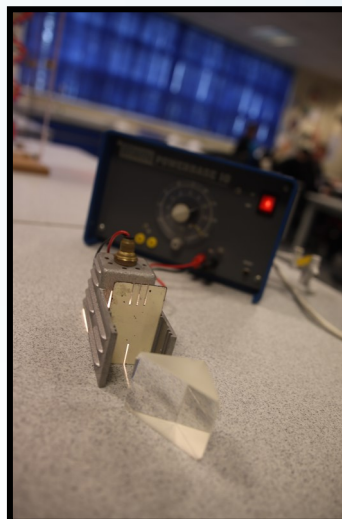
**Note: Students taking the Separate Science pathway will be awarded the three separate GCSE science subjects.**

# Physics (Separate Science)



## What will I do?

The Physics course is broken into eight separate topics. This course provides a firm foundation for progression to A-level Physics. On completion of the course students will be awarded a GCSE in Physics.



## What is studied in Key Stage 4?

- Forces; Energy; Waves
- Electricity
- Magnetism and Electromagnetism;
- Particle model of matter;
- Atomic structure
- Space physics

## How will I be assessed?

The Physics examinations consist of two written papers, each will be 1 hour and 45 minutes long. Each paper will assess the knowledge and understanding from different topics. Each is equally weighted and worth 50% of the overall GCSE.

## Where can I find more details?

From the AQA website: [AQA | Science | GCSE | Physics](#)

See your Science teacher or speak to Mr Carty (Head of Science)

## Additional information...

How science works is an important element of GCSE Physics. Students taking GCSE Physics can use the knowledge and skills they gain to specialise in any of the three separate sciences.

**Note: Students taking the Separate Science pathway will be awarded the three separate GCSE science sub-**

# Combined Science: Trilogy (GCSE)

## What will I do?

The students studying the Combined Science (Trilogy) course will study each of the three Sciences during Years 10 and 11. **This is a double award and is equivalent to two GCSEs.** In addition to the topics listed below, students will be required to undertake 16 specific practical scientific experiments.

## What is studied in Years 10/11?

### Biology

- Cell Biology
- Organisation
- Infection and response;
- Bioenergetics
- Homeostasis and response
- Inheritance, variation and evolution
- Ecology

### Chemistry

- Atomic structure and the periodic table
- Bonding, structure and the properties of matter
- Quantitative Chemistry
- Chemical changes
- The rate and extent of chemical change
- Organic Chemistry
- Chemical analysis
- Chemistry of the atmosphere
- Using resources

### Physics

- Forces
- Energy
- Waves
- Electricity
- Magnetism and Electromagnetism
- Particle model of matter
- Atomic structure

## How will I be assessed?

At the end of year 11, each pupil will sit six written examination papers, each lasting 1 hour 15 minutes, Students will sit either the higher or foundation tier papers.

Each paper is equally weighted and worth 16.7% of the overall GCSE.



## Where can I find more details?

From the AQA website: [AQA | Science | GCSE | Combined Science: Trilogy](#)

See your Science teacher or speak to Mr Carty (Head of Science)

## Additional information...

Note: Students that achieve the higher grades in combined science are still able to progress to study A-level Chemistry, Physics and Biology. Students are awarded two GCSE's which count towards the EBacc.

West Hill School

# Optional Subjects 2024



# Art (GCSE)

## What will I do?

Project work designed to meet the assessment objectives for the AQA GCSE Art and Design (Fine Art) course. The work you produce could include: drawing, painting, sculpture, installation, photography and the moving image, printmaking, mixed media and land art.

You will be building on the art skills you have gained at Key Stage 3 and developing your own individual approach to art.

You will need to research Artists and art styles through history, to ensure that you gain a sound knowledge of the world of Fine Art.

You will be expected to experiment with different media, refine your work and take inspiration from other artists as you develop your own ideas.

All work must be well presented, annotated and mounted on card.

## What is studied in Year 10?

- There will be 2 major coursework projects to complete in Year 10. These will cover aspects such as Natural Forms, Portraits, Objects, Landscape/Townscapes etc
- You will have an A2 folder, an A3 folder and two sketchbooks (One for each year).

## What is studied in Year 11?

- The Mock Exam for Art begins in September and continues through the Autumn term ending at Christmas.
- From January, you will be preparing work for the Externally Set task [Exam Project]. The questions are set by the exam board [AQA].

## How will I be assessed?

There will be continuous verbal assessments of tasks you have completed – or on which you are working. Formal assessment – based on the exam criteria will take place at the end of each project.

You will be given very clear feedback of your progress at various stages of the course and estimated exam results at appropriate times.

## Where can I find more details?

From the AQA website: [AQA | Art and Design | GCSE | Art and Design](#)

See your Art teacher or speak to Mr Butler (Head of Art)

## Additional information...

Students will follow the AQA **Fine Art** course. Groups are mixed ability – with a full range of abilities within each group. We have an excellent pass rate record. Many boys continue taking the subject in further and higher education.

# Business & Enterprise (NCFE Technical Award)

## What will I do?

The NCFE Level 1/2 Technical Award in Business and Enterprise is designed to provide students with the skills, knowledge and understanding of the applied study of good business and enterprise practices and an understanding of working in the sector.

Students are challenged through a hands-on practical content as well as note taking and assessments.

## What is studied?

- entrepreneurial characteristics and business aims and objectives
- legal structures, organisational structures and stakeholder engagement
- the marketing mix, market research, market types and orientation types
- internal and external influences on business
- research, resource planning and growth for business
- human resource requirements for a business start-up
- sources of enterprise funding and business finance
- business and enterprise planning

## How will I be assessed?

Unit 1 Introduction to Business and Enterprise	Externally assessed. 40% weighting
Unit 2 Business Project	Internally assessed. 60% weighting

## Where can I find more details?

More information can be found from the NCFE website: [www.Ncfe.org.uk](http://www.Ncfe.org.uk)

Speak to Mr Merlo (Head of Business Studies) or Miss Johnston.

## Additional information...

Depending on the grade the pupil achieves they can progress to:

- Level 2 Technical Certificates in; Accounting, Accounting and Business, Business Administration, Business and Enterprise, Customer Service Operations, Business Support
- Level 3 Applied General in; Enterprise and Entrepreneurship, Financial Studies, Business and Enterprise, Applied Business, Business
- Level 3 Technical Level in; Coordinating Business Support, Business: Marketing
- An apprenticeship within sectors such as a Finance, Marketing or Human Resources



# Business Studies (GCSE)

## What will I do?

You'll start by exploring the world of small businesses. How and why do business ideas come about? What makes a successful business? You'll learn how to develop an idea, spot an opportunity and turn it into a successful business.

Then you'll move on to investigating business growth. How does a business develop beyond the start-up phase? You'll learn about key business concepts and issues and decisions you need to make when growing a business and working in a global business.

**If you enjoy:** Communicating and explaining your ideas, thinking creatively and making decisions, working with numbers to solve business problems, learning about the world of business through real and relevant local and international brands then the GCSE Business course is the right subject for you.

## How will I be assessed?

The qualification will be assessed in two equally weighted exam papers. There is no coursework.

Paper One	Paper Two
Written exam: 105 minutes, 90 marks 50% of the total GCSE.	Written exam: 105 minutes, 90 marks 50% of the total GCSE
Multiple choice, calculation, short-answer and extended-writing questions	Multiple choice, calculation, short-answer and extended-writing questions

## Where can I find more details?

Visit the Pearson qualifications website for more information about what you will be studying and how you will be assessed.

Speak to Mr Merlo (Head of Business Studies) or Miss Johnston.

## Additional information...

After this qualification you'll understand the world of business and have developed skills in:

- making decisions and developing persuasive arguments
- creative and practical problem solving
- understanding data, finance and communication.

It's also a great step preparing you for further and higher education such as A-levels and BTEC courses.

A GCSE Business course could help prepare you for an entrepreneurial role and help you to gain an understanding of what is involved in a business-related profession, like accountancy, law, marketing or the leisure and tourism industry.

# Computer Science (GCSE)

## What will I do?

Here at West Hill, we offer a GCSE Computer Science course as an option choice. You will be following the Edexcel (GCSE) Computer Science (2020) syllabus.

GCSE Computer Science will develop not only your practical understanding of computers and the ability to program but also your ability to think logically and solve complex practical logical problems to enable you to develop sophisticated computer programs to overcome them.

## What is studied in Year 10 & 11?

Over the two years:

- Computer hardware structure
- Computer software
- Flow charts & pseudo-code
- Understanding the CPU architecture
- Practical programming (high percentage throughout)

- Understanding algorithms
- Software prototyping and testing
- Binary calculations
- Understanding the social issues of computers
- Preparation for the exam

## How will I be assessed?

You will be required to sit two examination assessments, both taken in Year 11. Each of the two papers are each worth 50% of your final grade.

Paper 1 is a standard written paper entitled 'Principles of Computer Science'. This is the theory paper (90 minutes)

Paper 2 is a practical 'on-computer' coding exam entitled 'Application of Computational Thinking' using the Python programming language (120 minutes)

## Where can I find more details?

Speak to Miss Worthington (Head of ICT)

Website : <http://qualifications.pearson.com/en/qualifications/edexcel-gcses/computer-science-2020.html>

## Additional information...

Note - Computer Science is a subject option that will require of you the ability to think logically to solve practical programming problems and will need you to understand and be able to apply some in-depth mathematical concepts and principles. Maths is heavily used in Computer Science.

# Design & Technology (GCSE)

## What will I do?

The Design & Technology course involves designing and making, using a wide range of materials. During the two year course students will carry out a number of mini-projects in order to develop their understanding of research, designing, materials, tools/equipment, processes, computer-aided design and manufacture (CAD/CAM) as well as Health and Safety issues in readiness for their final GCSE assessments.

## What is studied in Year 10 & 11?

Over the two years:

- Impact of new technologies
- Materials & new material developments
- Manufacturing Processes
- Design Skills

- Product Analysis
- Mechanical Movement
- Sustainability
- Design and Make Project

## How will I be assessed?

The WJEC EDUQAS GCSE (9-1) design technology course is in two parts, a non-examined assessment in the form of a Design and Make Project and a written externally assessed exam.

Design and Make Project (50%). A contextual challenge theme is provided and students have the freedom to design, innovate and create a prototype solution to a design brief they develop. The project requires investigating, designing, making and evaluating to be completed independently by students and allows them to use processes and materials most suitable to their individual project.

Written Exam (50%). This assesses students' knowledge of a wide range of materials, processes and tools used in design as well as their ability to analyse and evaluate design decisions of existing products and the wider social, moral, ethical and environmental issues in Design & Technology. Maths skills are also assessed within the written exam through contextual calculations and marks for these make up 15% of the GCSE.

## Where can I find more details?

<https://www.eduqas.co.uk/qualifications/design-and-technology-gcse>

Speak to Mr Dean (Design and Technology teacher) or Mr Diamond (Head of Technology)

## Additional information...

The course is aimed at students who have an interest in designing and working with all materials and learning more about them, through both practical tasks and theory. Students must be able to work independently, draw on very broad subject knowledge and have a passion for creative problem solving.

# Electronics (GCSE)

## What will I do?

You will learn how electricity flows around a circuit and how to predict its behaviour.

You will understand electronic system design processes.

You will learn how to read and interpret circuit diagrams.

You will use CAD/CAM methods to design and construct electronic circuits safely and accurately.

You will test and diagnose the circuits and components you have built using appropriate test equipment.

You will learn how to program your own PIC (Peripheral Interface Controller)

## What is studied in Year 10?

- Electronic circuit theory (Ohms law etc.)
- C.A.D. /C.A.M Circuit board design and manufacture
- Electronic circuit construction techniques.
- Component and circuit test procedures
- Electronic systems and subsystems

## What is studied in Year 11?

- Non-examined assessment. In the course of this you will design and make an electronic system as a solution to a specified problem
- Preparation for final examination

## How will I be assessed?

Component 1: Discovering Electronics. Written examination: 1 hour 30 minutes — 40% of qualification

Component 2: Application of Electronics. Written examination: 1 hour 30 minutes — 40% of qualification

Component 3: Extended system design and realisation task. Non-exam assessment — 20% of qualification

## Where can I find more details?

<https://www.eduqas.co.uk/qualifications/electronics-gcse>

Speak to Mr Diamond (Head of Technology)

## Additional information...

The exact Technology course studied will be determined following discussions between students, parents and the Technology team.

Electronics has a significant **scientific** and **mathematical** content within its programme of study.

Progression to is to A-levels, BTECs or apprenticeships.

# Food Preparation & Nutrition (GCSE)

## What will I do?

The GCSE in Food Preparation and Nutrition equips learners with the knowledge, understanding and skills required to cook and apply the principles of food science, nutrition and healthy eating. It encourages learners to cook, enables them to make informed decisions about food and nutrition and allows them to acquire knowledge in order to be able to feed themselves and others affordably and nutritiously, now and later in life.

## What is studied in Year 10?

1. Food commodities
2. Principles of nutrition
3. Diet and good health
4. The science of food
5. Where food comes from
6. Cooking and food preparation.

## What is studied in Year 11?

Assessment 1: The Food Investigation Assessment  
Investigate the working characteristics, function and chemical properties of ingredients through practical experimentation and use the findings to achieve a particular result

Assessment 2: The Food Preparation Assessment  
Plan, prepare, cook and present a selection of dishes, to meet particular requirements such as a dietary need, lifestyle choice or specific context.

## How will I be assessed?

The *GCSE Food and Nutrition* consists of two components:

**Component 1:** Principles of Food Preparation and Nutrition. Written examination taken at the end of Year 11 — 1 hour 45 minutes. 50% of qualification

**Component 2:** Food Preparation and Nutrition in Action. Non-examination assessment: internally assessed, externally moderated. Assessment 1: 8 hours. Assessment 2: 12 hours. 50% of qualification .

## Where can I find more details?

[www.eduqas.co.uk/qualifications/food-preparation-and-nutrition-gcse](http://www.eduqas.co.uk/qualifications/food-preparation-and-nutrition-gcse)

Speak to Miss Mason (Food Technology teacher) or Mr Diamond (Head of Technology)

## Additional information...

It is essential that all deadline dates for each assignment are met.

Ingredients must be provided from home on the allocated practical days.



# Geography (GCSE)

## What will I do?

The Geography GCSE qualification (AQA GCSE Geography 8035) studies geography in a balanced framework of physical and human themes, investigating the links between them.

Students who take GCSE Geography will gain a wide range of knowledge that is topical and relevant to the world around them. This specification also encourages students to understand their role in society, by considering different viewpoints, values and attitudes. Students will travel the world from their classroom, exploring case studies in the United Kingdom (UK), higher income countries (HICs), newly emerging economies (NEEs) and lower income countries (LICs).

Studying Geography will enable students to acquire the skills of: understanding, reading and interpreting maps; interpreting photographs, including satellite images; drawing maps, diagrams, graphs and tables; collecting, analysing, presenting and interpreting raw data.

## What is studied in Years 10/11?

### Living with the physical environment (Paper 1)

The challenge of natural hazards  
Physical landscapes in the UK  
The living world

### Challenges in the human environment (Paper 2)

Urban issues and challenges  
The changing economic world  
The challenge of resource management

### Geographical applications (Paper 3)

Issue evaluation  
Fieldwork

## How will I be assessed?

Linear exams in the Summer term will consist of 3 differently weighted papers. Paper 1 and 2 are each worth 35% of the overall grade, with Paper 3 worth the remaining 30%.

Paper 1: Living with the physical environment

- Written exam: 1 hour 30 minutes
- 88 marks (including 3 marks for spelling, punctuation, grammar and specialist terminology (SPGST))
- 35% of GCSE

Paper 2: Challenges in the human environment

- Written exam: 1 hour 30 minutes
- 88 marks (including 3 marks for SPGST)
- 35% of GCSE

Paper 3: Geographical applications

- Written exam: 1 hour 30 minutes
- 76 marks (including 6 marks for SPGST)
- 30% of GCSE
- Pre-release resources made available from mid-March in the year of the exam

All students will sit the same exam.

**Where can I find more details?** From the AQA website: [AQA | Geography | GCSE | Geography](#)

See your Geography teacher or speak to Mr Hill (Head of Geography)

## Additional information...

### Geography Residential

Part of the qualification requires students the opportunity to attend a 2 night residential field trip to Liverpool and Wales in preparation for their Geographical Application Paper. This residential will give students the experience of Human and Physical Geography in the field.

In Liverpool we will study the transformation of Liverpool's city centre through urban regeneration and complete human fieldwork whereas in Wales students will collect primary river data to explore the difference between courses of a river and how human intervention can impact natural processes.

# German Language (GCSE)



## What will I do?

GCSE builds on many of the themes already studied at KS3. Lessons include a variety of activities with the emphasis on boys being able to use the language to express their own ideas and opinions.

Boys considering this course must be prepared to learn vocabulary weekly.

Examining body AQA.

## What is studied in Year 10?

### Theme 1: Identity and culture

Family/Free time

### Theme 2: Local, national, international and global areas of interest

Home / Travel

## What is studied in Year 11?

### Theme 3: Current and future study and employment

School /Jobs.

Examination practice

## How will I be assessed?

25% writing : Translations into and from German, a short writing task of 40 words and a longer writing task of 90/150 words.

25% speaking : Role play and general conversation. Foundation 7-9 minutes. Higher 10 -12 minutes.

25% reading : Foundation or Higher level paper taken in May/June of Year 11.

25% listening: Foundation or Higher level paper taken in May/June of Year 11.

## Where can I find more details?

From the AQA website: [AQA | Languages | GCSE | German](#)

See your Languages teacher or speak to Mrs Kenworthy (Head of Languages)

## Additional information...

There may be opportunities to engage in a visit to Germany.

There are local visits involving language activities.

This course facilitates progression to A-level German.

# History (GCSE)



## What will I do?

GCSE History will give you the opportunity to study significant events and people that have shaped the world we live in. You will follow the Pearson Edexcel specification and focus on four main topics: Medicine in Britain 1250-present day, Early Elizabethan England 1558-88, Superpower relations and the Cold War 1941-91 and Germany 1918-39.

You will enjoy and be successful on this course if you are interested in:

- Reading, researching and writing at length.
- Investigating how and why people's lives and understanding have changed over time.
- Discussing why there are sometimes different, but equally valid points of view on the same subject.

History is a subject that will develop your skills of analysis and evaluation and help prepare you for academic courses at A level in subjects such as History, Law, Government and Politics. You will become much more critical of what you read and hear in the news and it will develop your abilities to reason and argue your point of view clearly.

## What is studied in Year 10?

### Paper 1 Thematic study and historic environment:

Medicine in Britain, c1250-present *and* The British sector of the Western Front, 1914-18: injuries, treatment and the trenches.

### Paper 3 Modern depth study:

Weimar and Nazi Germany, 1918-39.

## What is studied in Year 11?

### Paper 2 Period study and British depth study:

Early Elizabethan England, 1558-88  
Superpower Relations and the Cold War 1941-91.

## How will I be assessed?

Paper 1: Written examination: 1 hour and 15 minutes. Worth 30% of the qualification.

Paper 2: Written examination: 1 hour and 45 minutes. Worth 40% of the qualification.

Paper 3: Written examination: 1 hour and 20 minutes. Worth 30% of the qualification.

There is no coursework. All three exam papers will be sat at the end of Year 11.

## Where can I find more details?

Visit the Edexcel website—[www.edexcel.com](http://www.edexcel.com) (Pearson Edexcel Level 1/Level 2 GCSE (9-1) in History (1H10)

See your History teacher or speak to Mrs Anderton (Head of History)

## Additional information...

Remember, this is a course that requires good communication skills and high levels of literacy and articulation.



# Music (GCSE)

## What will I do?

GCSE Music offers students the opportunity to build upon skills learnt during KS3. The three areas of Performing, Listening and Composing are the basic components that make up the course.

Most students choose music because they enjoy playing their instrument. Therefore, a large percentage of marks are allocated to performance. Students are required to perform individually and in a group. Although not compulsory, it is advantageous if a student is learning an instrument *before* they enter Year 10. GCSE music is also accessible to students with a music technology and DJ background. For further advice and guidance regarding this, see Mr Wells.

Students will be taught composition techniques and how to incorporate these into their own compositions. They will use the Apple Mac suite and learn how to use the music software 'Sibelius' and 'Garageband' in order to compose two original compositions in their chosen style.

Throughout the course, students will listen to a range of musical genres and study two set works selected by the exam board. Through this process they will learn the history of music, musical vocabulary and how to recognise musical techniques and devices used by composers. All of which is required knowledge for their final written exam.

## What is studied in Year 10?

- How to compose using composing techniques
- Listening to a variety of musical genres
- Learning to recognise musical devices, techniques and characteristics
- History of Music and Composers
- Performance opportunities

## What is studied in Year 11?

- Performance
- Composition
- Listening and appraising preparation for the final written examination.

## How will I be assessed?

Unit 1: Understanding Music (written exam) – 40%

Unit 2: Performing Music – 30%

Unit 3: Composing Music – 30%

## Where can I find more details?

From the AQA website—[AQA | Subjects | Music](#)

See your Music teacher or speak to Mr Wells (Head of Music)

## Additional information...

Students choosing Music must be committed to playing their instrument, attending their weekly instrumental lesson and regularly practising their instrument to a satisfactory standard.

Participation and commitment to school music ensembles is expected and additional groups outside of school are recommended to improve their all round musical skills.

# Physical Education (GCSE)

## What will I do?

- Develop theoretical knowledge and understanding of the factors that underpin physical activity and sport and use this knowledge to improve performance.
- Understand how the physiological and psychological state affects performance in physical activity and sport.
- Perform effectively in different physical activities by developing skills and techniques and selecting and using tactics, strategies and/or compositional ideas.
- Develop my ability to analyse and evaluate to improve performance in physical activity and sport.
- Understand the contribution which physical activity and sport make to health, fitness and well-being.

## What is studied in Year 10?

- Applied anatomy and physiology
- Effects of exercise on the body
- Components of fitness
- Movement analysis
- Injury prevention
- Principles of training

## What is studied in Year 11?

- Engagement patterns
- Ethical & socio-cultural issues in sport.
- Sports psychology
- Health, fitness and well-being
- AEP (coursework)
- Benefits of exercise
- Commercialisation

## How will I be assessed?

**Unit 1** Externally assessed through 2 written examination papers each of 1 hour. This will contribute a maximum of 60% towards your total marks. The examinations will be taken at the end of Year 11.

**Unit 2** Assessed in two sections.

**Section 1** – Three practical performances in the role of player in **competition**. Worth 30% of the total marks.

**Section 2** – Analysis of Performance in one of the chosen activities. This will be worth 10% and will include a written Personal Exercise Programme.

Note: Unit 2 is on-going assessment and is finally assessed in the March of Year 11.

## Where can I find more details?

From the OCR website—[www.ocr.org.uk](http://www.ocr.org.uk) (GCSE Physical Education)

See your PE teacher or speak to Mr Battarbee (Head of PE)

## Additional information...

- Playing in sports in competitive situations is key. This can be **in** and/or **out** of school.
- You are examined in 3 different sports: 1 Team ,1 Individual and 1 other (either Team or Individual).
- A good general knowledge of sport and a willingness to **try and succeed** in every sport offered to you.

# Spanish Language (GCSE)



## What will I do?

GCSE builds on many of the themes already studied at KS3. Lessons include a variety of activities with the emphasis on boys being able to use the language to express their own ideas and opinions.

Boys considering this course must be prepared to learn vocabulary weekly.

Examining body AQA.

## What is studied in Year 10?

### Theme 1: Identity and culture

Family/Free time

### Theme 2: Local, national, international and global areas of interest

Home / Travel

## What is studied in Year 11?

### Theme 3: Current and future study and employment

School /Jobs.

Examination practice

## How will I be assessed?

25% writing : Translations into and from Spanish, a short writing task of 40 words and a longer writing task of 90/150 words.

25% speaking : Role play and general conversation. Foundation 7-9 minutes. Higher 10 -12 minutes.

25% reading : Foundation or Higher level paper taken in May/June of Year 11.

25% listening: Foundation or Higher level paper taken in May/June of Year 11.

## Where can I find more details?

From the website: [AQA | Languages | GCSE | Spanish](#)

See your Languages teacher or speak to Mrs Kenworthy (Head of Languages)

## Additional information...

There may be opportunities to engage in a visit to a Spanish speaking country.

There are local visits involving language activities.

This course facilitates progression to A-level Spanish.

# Religious Studies (GCSE)

## What will I do?

You will explore your own, religious and atheist responses to challenging moral questions on issues such as capital punishment, war and matters of life and death. You will also develop a deep and detailed understanding of core Islamic and Christian beliefs and you will be able to explain how these beliefs are reflected in the lives of believers today. The thematic element of the course makes up 50% of what you will be studying with 50% of the study time spent on learning about religious beliefs and their application in the world today.

You do not have to be religious to study this course. You simply need to be interested in ethical questions, debates, learning about what different religious people believe and what others think. You should be willing to think deeply about your own opinions and be prepared to evaluate religious responses to the ultimate questions that face us all, such as 'What happens to us when we die?' and 'Is it ever okay to go to war?'

## What is studied in Year 10?

### Religion and Ethics (Christianity)

- Christian Beliefs
- Marriage and the Family
- Living the Religious Life
- Matters of Life and Death

## What is studied in Year 11?

### Religion, Peace and Conflict (Islam)

- Islamic Beliefs
- Crime and Punishment
- Living the Islamic Life
- Peace & Conflict

## How will I be assessed?

The course is examined at the end of Year 11. Two examinations will be taken, one examination will cover the content studied in Year 10 (Religion and Ethics: Christianity) and the other the content studied in Year 11 (Religion, Peace and Conflict: Islam).

Each exam is 1 hour and 45 minutes long.

## Where can I find more details?

From the [Edexcel website](#) (Religious Studies B: Paper 1 (Religion and Ethics: Christianity) and Paper 2 (Religion, Peace and Conflict: Islam))

See your RE teacher or speak to Mr Harrison (Head of RE).

## Additional information...

You will study the issues raised from a religious, global and personal perspective. You will enjoy and therefore, do well in the course if you are interested in:

Learning about and from religion.

Debating and understanding why there are sometimes different, but equally valid, points of view on the same subject.

Finding out about people's lives, beliefs and changing opinions.

Ultimate Questions (Why are we here? Why do things happen?)

This course may be right for you if you are interested in a career in law, the police service, politics or medicine because of the ethical component in the course. Likewise, as you are learning about people and why they believe what they do, this will support you in any career that involves working with and understanding others.

# Sport Studies (Cambridge National)

## What will I do?

As part of the Cambridge National, you'll cover:

- how technology is used in sport
- how to develop as a team player and how to develop as a leader
- plan, deliver and evaluate your own sports activity session
- performing in front of an audience
- the connection between sport and media, and the different ways that sport is represented
- local and national outdoor activities, how to prepare and benefit from them

## What is studied ?

**R184: Contemporary issues in sport.** This is assessed by an exam. By completing this unit you will understand a range of topical and contemporary issues in sport, including learning about participation levels and barriers to completing sporting activities. You will also learn how participation is impacted by the promotion of values and ethical behaviour, about the role of high-profile sporting events, the role of national governing bodies and how technology is used in within sport.

### **R185: Performance and leadership in sports activities.**

This is assessed by a set assignment In this unit you will have an opportunity to develop your skills both as a performer in two different sporting activities, and as a leader, developing a range of transferable skills.

**R187: Increasing awareness of Outdoor and Adventurous Activities.** In this unit you will learn how to find out information about what opportunities there are in your local area, as well as nationally in the UK, for all different types of activities. You will learn how you can benefit from and enjoy activities safely by finding out what equipment, clothing, facilities and technology you need, as well as completing planning to help keep you safe.

## How will I be assessed?

Unit 1 is assessed by a 1 hour and 15 minutes exam. The remaining two units are non-examined assessment.

## Where can I find more details?

Ask Mr Battarbee (Head of Department) or Mr Davies (2<sup>nd</sup> in Department). Alternatively visit:-

<https://www.ocr.org.uk/qualifications/cambridge-nationals/sport-studies-level-1-2-j829/>

## Additional information...

Depending on the grade the pupil achieves they can progress to: Level 3 vocational qualifications such as Cambridge Technical Award or A levels.

